

Trauma and Injury Intelligence Group Biannual Bulletin

Salford Royal Hospital Emergency Department
October 2014 to September 2015

December 2015



Centre for Public Health,
Faculty of Education, Health and Community,
Liverpool John Moores University,
Henry Cotton Campus,
15-21 Webster Street,
Liverpool, L3 2ET

cph.org.uk

0151 231 4500

tiig@ljmu.ac.uk

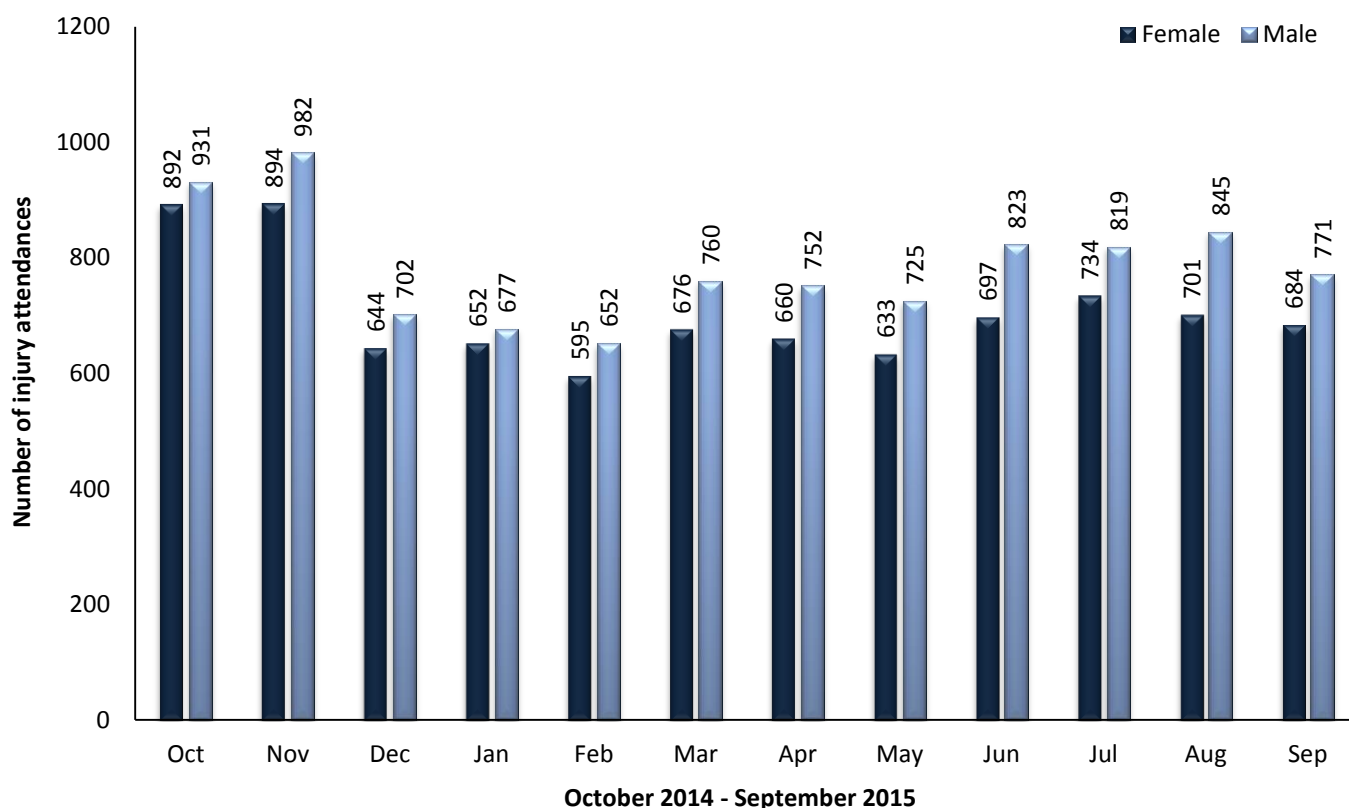
tiig.info

twitter.com/tiig_cph

ALL INJURY ATTENDANCES

This bulletin provides a breakdown of all injury attendances to Salford Royal Hospital Emergency Department (ED) between October 2014 and September 2015. During this twelve month period there were 17,917 injury attendances to the ED. The month with the highest number of attendances, calculated as a daily average, was November 2014 (63 per day), while December 2014 and January 2015 had the fewest attendances (43 per day; figure 1).

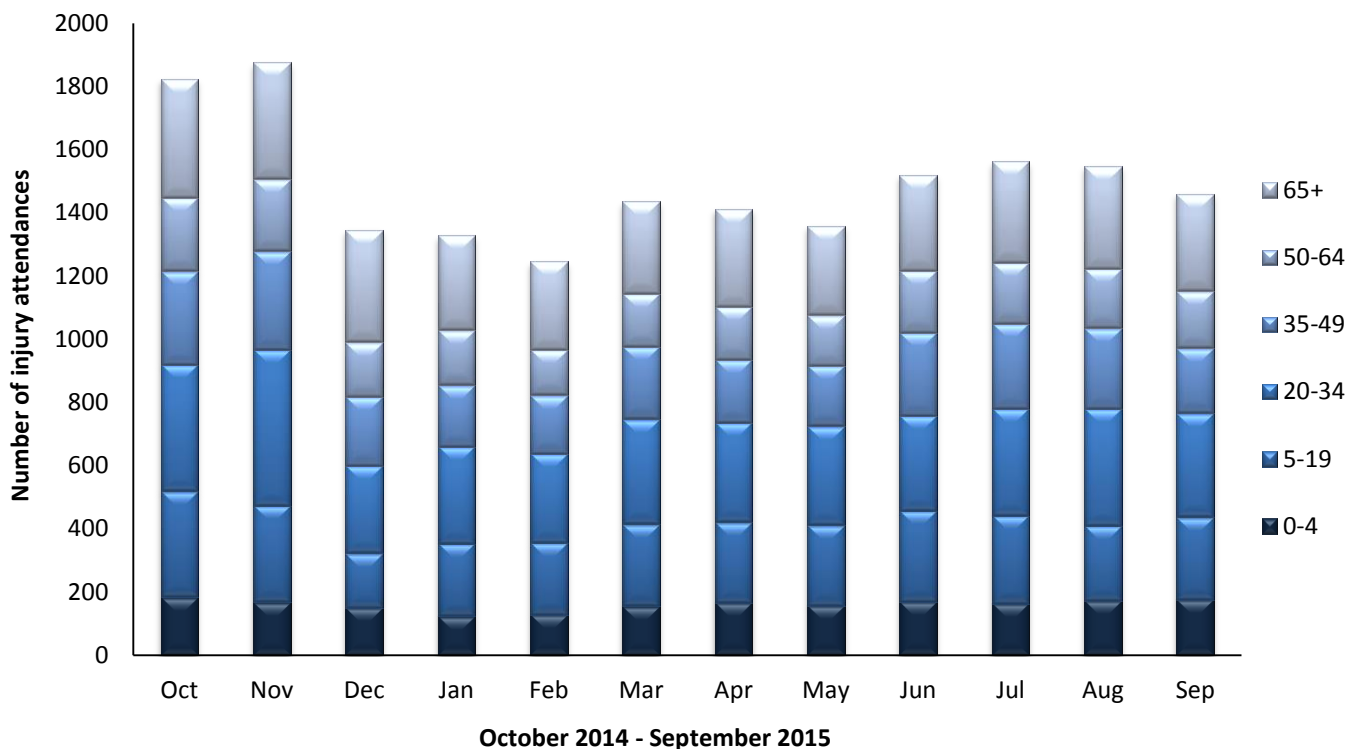
Figure 1: ED injury attendances by gender and month, October 2014 to September 2015*



* There were 16 records where the gender was unknown which have been omitted from this figure.

Males accounted for over half (53%) of all attendances (figure 1). The largest proportions of attendances were for people aged between 20 and 34 years (23%) and 65 years and over (21%; figure 2).

Figure 2: ED injury attendances by age group and month, October 2014 to September 2015⁺



+ Records where the age was unknown have been omitted (n=<5).

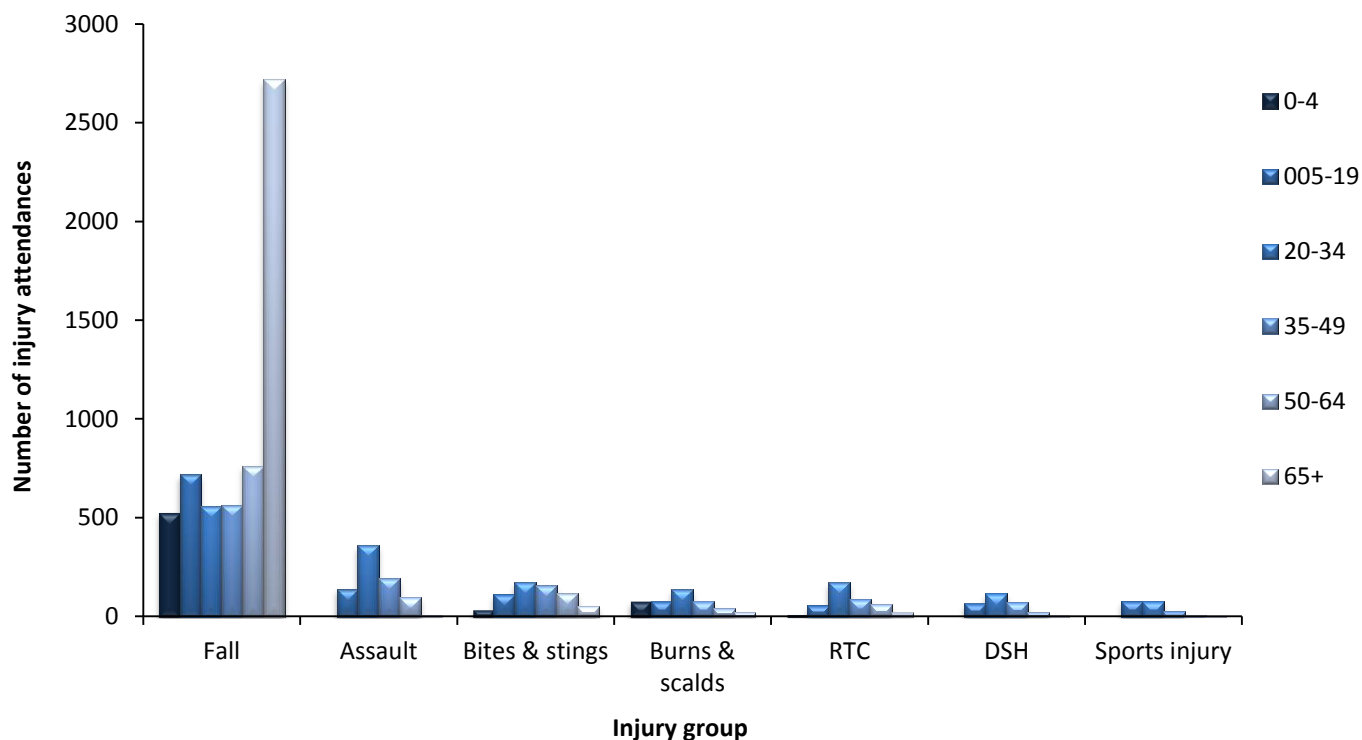
The majority (52%) of attendances did not have a specific injury group recorded. Of the specified injury groups, falls accounted for the highest proportion (33%), assaults accounted for 4% of attendances and bites and stings accounted for 4% (table 1).

Table 1: ED injury attendances by injury group and month, October 2014 to September 2015

Injury group	Oct	Nov	Dec	Jan	Feb	Mar	Apr	May	Jun	Jul	Aug	Sep	Total	%
Other injury	1155	1094	634	698	643	677	680	678	754	799	746	749	9307	52
Fall	441	493	520	440	422	518	510	454	550	491	515	494	5848	33
Assault	53	87	61	64	53	71	76	78	52	60	73	72	800	4
Bites & stings	58	38	34	32	21	45	42	49	78	103	95	56	651	4
Burns & scalds	27	34	30	33	32	38	28	45	28	50	48	36	429	2
RTC	38	69	41	29	42	47	26	16	24	22	28	29	411	2
DSH	28	26	18	21	21	12	32	24	26	27	27	18	280	2
Sports injury	23	35	8	12	13	28	18	14	8	10	16	6	191	1
Total	1823	1876	1346	1329	1247	1436	1412	1358	1520	1562	1548	1460	17917	100

Almost half (47%) of fall attendees were aged 65 years or over, over two fifths (45%) of assault attendees were aged between 20 and 34 years and over four in ten (42%) RTC attendees were aged between 20 and 34 years (figure 3).

Figure 3: ED injury attendances by age group and injury group (excluding other injury), October 2014 to September 2015[§]



[§] Records where the age was unknown have been omitted, (n=<5).

Table 2 shows the ethnicity of injury attendees to Salford Royal Hospital ED; the large majority (92%) were White.

Table 2: ED injury attendances by ethnicity and month, October 2014 to September 2015^{1,2}

Ethnicity	Oct	Nov	Dec	Jan	Feb	Mar	Apr	May	Jun	Jul	Aug	Sep	Total	%
White	1601	1741	1250	1245	1161	1323	1297	1256	1410	1467	1444	1349	16544	92
Black	26	32	19	24	22	30	25	26	28	22	20	31	305	2
Not stated	104	20	14	4	11	16	15	15	8	9	8	7	231	1
Mixed	19	24	17	14	15	16	13	16	23	22	23	12	214	1
Any other ethnic group	30	30	14	17	12	20	19	13	15	14	9	13	206	1
Any other Asian	18	14	9	8	10	15	17	10	17	9	14	18	159	1
Pakistani	<15	5	12	8	6	10	10	13	6	***	<15	16	111	1
Indian	5	5	5	5	***	***	8	7	6	6	8	9	71	0
Chinese	7	***	6	***	5	***	***	***	7	8	6	***	56	0
Bangladeshi	***	***	0	***	***	0	***	***	0	***	***	***	20	0
Total	1823	1876	1346	1329	1247	1436	1412	1358	1520	1562	1548	1460	17917	100

The disposal of a patient can give an indication of the severity of the injuries sustained. Over four in ten (43%) of attendees were discharged, almost three in ten (27%) were referred for further treatment and 25% were admitted to hospital (table 3).

¹ Please note that for all tables, all numbers less than five have been suppressed (***) in line with patient confidentiality. If there is only one number less than five in a category then two numbers will be suppressed to prevent back calculation from totals.

² White = Irish, British, other White background; Mixed = White and Black, White and Asian, mixed - any other; Black = African, Caribbean, other Black.

Table 3: ED injury attendances by disposal method and month, October 2014 to September 2015

Disposal method	Oct	Nov	Dec	Jan	Feb	Mar	Apr	May	Jun	Jul	Aug	Sep	Total	%
Discharged	724	779	590	567	543	638	632	605	649	681	672	660	7740	43
Referral/follow up	463	502	344	371	330	383	393	341	441	440	407	362	4777	27
Admitted	383	374	371	357	333	375	342	375	382	377	411	389	4469	25
Other	253	221	41	34	41	40	45	37	48	64	58	49	931	5
Total	1823	1876	1346	1329	1247	1436	1412	1358	1520	1562	1548	1460	17917	100

Table 4 shows the arrival method of attendances to the ED. Just over one quarter (26%) of attendees arrived by ambulance.

Table 4: ED injury attendances by arrival mode and month, October 2014 to September 2015

Arrival mode	Oct	Nov	Dec	Jan	Feb	Mar	Apr	May	Jun	Jul	Aug	Sep	Total	%
Other	1419	1486	949	945	909	1051	1052	994	1105	1155	1140	1066	13271	74
Brought in by ambulance	404	390	397	384	338	385	360	364	415	407	408	394	4646	26
Total	1823	1876	1346	1329	1247	1436	1412	1358	1520	1562	1548	1460	17917	100

Table 5 shows the incident location. Almost two thirds (63%) of injury attendances were recorded as other location, while 21% occurred in the home and 7% occurred in a public place.

Table 5: ED injury attendances by incident location and month, October 2014 to September 2015

Incident location	Oct	Nov	Dec	Jan	Feb	Mar	Apr	May	Jun	Jul	Aug	Sep	Total	%
Other	1283	1282	825	813	775	917	842	840	936	902	999	948	11362	63
Home	277	282	332	317	280	290	340	291	345	390	326	267	3737	21
Public place	107	136	84	77	66	84	109	103	93	122	137	101	1219	7
Work	88	99	63	63	67	73	79	70	75	99	81	84	941	5
Educational establishment	68	77	42	59	59	72	42	54	71	49	5	60	658	4
Total	1823	1876	1346	1329	1247	1436	1412	1358	1520	1562	1548	1460	17917	100

ASSAULT ATTENDANCES

Between October 2014 and September 2015 there were 800 assault-related injury attendances to Salford Royal Hospital ED. The majority of attendees (73%) were male and almost half (45%) were aged between 20 and 34 years while just under one quarter (24%) were aged between 35 and 49 years. Almost four in ten assaults (39%) arrived at the department by ambulance (table 6).

Table 6: ED assault attendances by gender, arrival mode and age group, October 2014 to September 2015^{1,^,*}

	Assault attendances (n=800)		All injury attendances (n=17,917)	
	n	%	n	%
Gender				
Male	585	73		53
Female	<215	27		47
Arrival mode				
Other	485	61		74
Ambulance	315	39		26
Age group				
0 - 4	***	0		11
5-19	138	17		17
20 - 34	361	45		23
35 - 49	194	24		16
50 - 64	97	12		12
65 plus	<10	1		21

[^] Records where the age was unknown have been omitted (n=<5).

* Records where the gender was unknown have been omitted (n=<5)